



12 Gauge Autoloading Shotgun

MAXUS®

IMPORTANT: When ordering, list part number, part name, gun gauge/caliber and serial number. Please specify grade.
Prices F.O.B. point of shipment — subject to change without notice. Prices effective January 1, 2013.

REF. NO.	PART NO.	DESCRIPTION	MSRP (US\$)
1	B111607301	ACTION SPRING	\$2.50
2	B111607502	ACTION SPRING PLUNGER	5.00
3	U1117474AX	ACTION SPRING RETAINER	12.50
4	BST41273E2	ACTION SPRING RETAINER PIN	3.75
6	* U1117472AJ	ACTION SPRING TUBE	30.00
7	*** B1141296W9	BOLT ASSEMBLY (COMPLETE)	110.00
8	* B1141295W9	BREECH BLOCK SLIDE ASSEMBLY (W/ LINK)	110.00
8	* B1141307W9	BREECH BLOCK SLIDE ASSEMBLY, MACHINE TURNED (W/ LINK)	110.00
NS	B111657001	CANTILEVER BUFFER, RIFLED DEER	2.50
10	* B1141063A1	CARRIER, FRONT, BLACK	39.75
10	* B1141063EA	CARRIER, FRONT, NICKEL WITH MACHINE-TURNED	39.75
10	* B1141063EE	CARRIER, FRONT, SATIN NICKEL	39.75
11	* B1141064A1	CARRIER, REAR, BLACK	42.75
11	* B1141197EA	CARRIER, REAR, MACHINE-TURNED	42.75
11	* B1141277EE	CARRIER, REAR, SATIN NICKEL	42.75
12	* B1141453FV	CARRIER DOG	13.50
13	B111628701	CARRIER DOG BUFFER	3.75
14	B111628502	CARRIER DOG LOWER STOP	1.25
15	B111628002	CARRIER DOG PIN	2.50
16	B1141247AE	CARRIER DOG SPRING	2.50
17	B111628201	CARRIER DOG SPRING GUIDE	2.50
18	B111628401	CARRIER DOG UPPER STOP	1.25
19	U1117516JF	CARRIER LATCH, 12, 3"	29.00
19	U1117511JF	CARRIER LATCH, 12, 3.5"	29.00
20	U1117926AA	CARRIER LATCH DAMPER	3.00
21	U111751702	CARRIER LATCH PIN	1.25
22	B111609611	CARRIER LATCH PIN CLIP	1.25
23	B1141084AE	CARRIER SPRING	3.75
NS	U111751801	CARRIER LATCH SPRING	2.50
24	U111750103	CARTRIDGE STOP	7.00
25	U1117549EF	CARTRIDGE STOP / CARRIER LATCH ASSEMBLY, 12, 3"	40.50
25	U1117548EF	CARTRIDGE STOP / CARRIER LATCH ASSEMBLY, 12, 3.5"	40.50
26	U111750501	CARTRIDGE STOP SPRING	1.25
27	*** B1141357AX	DISCONNECTOR	6.00
27A	*** B1141060RE	DISCONNECTOR / TRIGGER SPRING	3.50
27B	B111620602	DISCONNECTOR PIN	1.25
30	* B1141002AJ	EJECTOR	13.50
31	B1141003AJ	EJECTOR PIN	3.75
32	B1141004AE	EJECTOR SPRING	3.25
33	* B111616413	EXTRACTOR	15.00
34	B111616602	EXTRACTOR PIN	2.50
35	B111616301	EXTRACTOR SPRING	1.25
36	* B1141045E2	FIRING PIN	12.00
37	B1141046AX	FIRING PIN RETAINING PIN	3.25
38	B1141184AJ	FIRING PIN RETAINING PIN BUSHING	4.25
39	* B1141380EJ	FOREARM, 12, DU 75TH ANNIV.	180.00
39	* B1141137EJ	FOREARM, 12, HUNTER	165.00
39	B1141429XR	FOREARM, 12, MAX-4	110.00
39	B1141363W0	FOREARM, 12, MOBL	110.00
39	B1141398XM	FOREARM, 12, MOBUS	110.00

REF. NO.	PART NO.	DESCRIPTION	MSRP (US\$)
39	B1141134WE	FOREARM, 12, MODB (DT)	\$110.00
39	B1141326W8	FOREARM, 12, MOINF (DT)	110.00
39	B1141322W8	FOREARM, 12, RIFLED DEER, MOINF (DT)	110.00
39	B1141321E7	FOREARM, 12, RIFLED DEER, STALKER (DT)	110.00
39	* B1141303EJ	FOREARM, 12, SPORTING	180.00
39	B1141268W5	FOREARM, 12, SPORTING CARBON FIBER (DT)	110.00
39	B1141423EJ	FOREARM, 12, SPORTING GOLDEN CLAYS	200.00
39	B1141076E7	FOREARM, 12, STALKER (DT)	110.00
39	* B1141424EH	FOREARM, 12, ULTIMATE	180.00
NS	B111633411	FOREARM O-RING	1.25
48	*** B1141050AK	HAMMER	14.75
49	*** B1141051AX	HAMMER LINK ASSEMBLY	11.00
50	B1141052AX	HAMMER LINK PIN	4.00
51	B1141053AX	HAMMER PLUNGER	4.25
52	B1141054AE	HAMMER SPRING	4.25
53	B1141055AX	HAMMER SPRING PLUNGER PIN	2.75
54	B1141036AJ	LINK	28.50
55	B1141037AX	LINK PIN	3.75
56	B1141038AE	LINK SPRING	3.25
57	B1141022AE	MAGAZINE CAP RETAINER CLIP	3.75
58	B1141030HM	MAGAZINE CUT-OFF, BLACK	12.50
58	B1141030JE	MAGAZINE CUT-OFF, NICKEL	12.50
59	B111610402	MAGAZINE CUT-OFF PLUNGER, BLACK	1.25
59	B111645202	MAGAZINE CUT-OFF PLUNGER, NICKEL	1.25
60	B111610601	MAGAZINE CUT-OFF PLUNGER PIN	2.00
61	B111610202	MAGAZINE CUT-OFF SPRING, BLACK	2.50
61	B111645102	MAGAZINE CUT-OFF SPRING, NICKEL	2.50
62	B111610802	MAGAZINE CUT-OFF RETAINER SCREW, BLACK	2.50
62	B111645402	MAGAZINE CUT-OFF RETAINER SCREW, NICKEL	2.50
63	B1141114AP	MAGAZINE FOLLOWER	8.75
63A	B1141027AX	MAGAZINE PLUG RING	3.75
64	B1141024AE	MAGAZINE SPRING	6.00
65	B1141026AX	MAGAZINE SPRING RETAINER	23.25
66	B1141025AA	MAGAZINE THREE SHOT ADAPTOR	3.00
66	B1141025HA	MAGAZINE THREE SHOT ADAPTOR, SPORTING	3.00
67	B1141015A7	MAGAZINE TUBE	50.25
68	B1141035AM	OPERATING HANDLE, BLACK	10.25
68	B1141035EA	OPERATING HANDLE, NICKEL	10.25
68	B1141035W9	OPERATING HANDLE, SATIN NICKEL	10.25
69	U111754002	OPERATING HANDLE PLUNGER	1.25
70	U111754502	OPERATING HANDLE PLUNGER PIN	1.25
71	U111754401	OPERATING HANDLE PLUNGER SPRING	1.25
72	B1141068AA	PISTOL GRIP CAP, BLACK (COMPOSITE MODELS)	3.75
73	B1141384FN	PISTON ASSEMBLY	73.75
NS	* B1141016FN	PISTON HOUSING	20.00
74	* B1141017FN	PISTON GAS VALVE REGULATOR	16.75
75	* U1141383AE	PISTON VALVE REGULATOR SPRING	5.00
76	* BST41019AA	PISTON O-RING	3.00
77	* B1141018E0	PISTON SEGMENT, INNER	6.25
78	* B111605322	PISTON SEGMENT, OUTER	7.25

*Indicates part must be fitted by Browning Service Department or qualified gunsmith.
 ***Factory replacement only. Firearm must be returned. (DT) Denotes Dura-Touch Armor Coating
 +Part may be purchased only by holders of a current, valid Federal Firearms License.
 NOTE: Unless otherwise indicated, part is interchangeable between gauges/calibers.



12 Gauge Autoloading Shotgun

MAXUS®

IMPORTANT: When ordering, list part number, part name, gun gauge/caliber and serial number. Please specify grade.
Prices F.O.B. point of shipment — subject to change without notice. Prices effective January 1, 2013.

REF. NO.	PART NO.	DESCRIPTION	MSRP (US\$)
79	* B1141020FN	PISTON VALVE SPRING NUT	\$10.00
80	* B111605912	PISTON VALVE WASHER	2.50
81	*+ B1141381E5	RECEIVER, 12, 3", DU 75TH ANNIV.	600.00
81	*+ B1141457E5	RECEIVER, 12, 3", DU 75TH ANNIV., CANADA	600.00
81	*+ B1141226F5	RECEIVER, 12, 3", HUNTER	550.00
81	*+ B1141312W7	RECEIVER, 12, 3", MOINF	500.00
81	*+ B1141304F5	RECEIVER, 12, 3", SPORTING	550.00
81	*+ B1141275W4	RECEIVER, 12, 3", SPORTING CARBON FIBER	500.00
81	*+ B1141415E5	RECEIVER, 12, 3", SPORTING GOLDEN CLAYS	575.00
81	*+ B1141225AT	RECEIVER, 12, 3", STALKER	500.00
81	*+ B1141444F5	RECEIVER, 12, 3", ULTIMATE	550.00
81	*+ B1141193F5	RECEIVER, 12, 3.5", HUNTER	550.00
81	*+ B1141012XP	RECEIVER, 12, 3.5", MAX-4	500.00
81	*+ B1141012WX	RECEIVER, 12, 3.5", MOBL	500.00
81	*+ B1141012XK	RECEIVER, 12, 3.5", MOBUS	500.00
81	*+ B1141012F9	RECEIVER, 12, 3.5", MODB	500.00
81	*+ B1141311W7	RECEIVER, 12, 3.5", MOINF	500.00
81	*+ B1141200AT	RECEIVER, 12, 3.5", STALKER	500.00
NS	B111603511	RECEIVER INSERT, SPORTING CLAYS	2.50
NS	B111603602	RECEIVER INSERT PIN, SPORTING CLAYS	1.25
82	BST14104AA	RECOIL PAD, INFLEX I, FOOTPRINT 1 (FOR COMPOSITE MODELS)	45.00
82	BST14136AA	RECOIL PAD, INFLEX I, FOOTPRINT 2 (FOR WOOD MODELS)	45.00
83	BST41181EX	RECOIL PAD SCREW (FOR COMPOSITE MODELS)	3.75
83	BST41350EX	RECOIL PAD SCREW, WOOD, 1-3/8"	3.75
83	BST17091EX	RECOIL PAD SCREW, WOOD, 1"	3.75
84	U1117809AA	RECOIL PAD SPACER, LOP, COMPOSITE, 1/4"	5.00
84	B1181097AA	RECOIL PAD SPACER, LOP, WOOD, 1/4"	5.00
85	U1117932AA	RECOIL PAD SPACER, POSITIONING PLATE (COMPOSITE MODELS)	3.75
NS	BST81089AX	RECOIL PAD THREADED SCREW INSERT, WOOD	2.50
86	*** B1141062AX	SAFETY	8.50
87	*** B111682302	SAFETY PLUNGER	5.00
88	*** B111621211	SAFETY PLUNGER SPRING	1.25
NS	B111658602	SCOPE MOUNT RECEIVER FILLER SCREW	2.50
NS	B111695802	SCOPE MOUNT RECEIVER INSERT	2.50
89	*** B1141377AJ	SEAR	7.00
90	*** B1141057AX	SEAR PIN	4.00
91	B1141058HE	SEAR SPRING	2.75
92	BST1658101	SIGHT, FRONT, FIELD	2.50
92	B111670201	SIGHT, FRONT, HI-VIZ TRI COMP, SPORTING	21.75
92	BST81232AT	SIGHT, FRONT, RED FIBER-OPTIC	6.75
NS	BST3333001	SIGHT, MID-BEAD (WHITE)	1.25

REF. NO.	PART NO.	DESCRIPTION	MSRP (US\$)
NS	B111670302	SIGHT FIXING PIN, SPORTING CLAYS	\$1.25
93	B1141153AP	SLEEVE BAR ASSEMBLY	34.75
94	B1141042AE	SLEEVE BAR SPRING	3.50
95	B1141274AE	SLIDE BUFFER	3.75
96	B1141085E7	STOCK, 12, STALKER (DT)	100.00
96	B1141132WE	STOCK, 12, MODB (DT)	100.00
96	B1141264W5	STOCK, 12, SPORTING CARBON FIBER (DT)	100.00
96	* B1141265EJ	STOCK, 12, SPORTING	100.00
96	B1141318W8	STOCK, 12, MOINF (DT)	100.00
96	* B1141349EJ	STOCK, 12, HUNTER	130.00
96	B1141361W0	STOCK, 12, MOBL (DT)	100.00
96	* B1141379EJ	STOCK, 12, DU 75TH ANNIV.	150.00
96	B1141396XM	STOCK, 12, MOBUS (DT)	100.00
96	* B1141418EJ	STOCK, 12, SPORTING GOLDEN CLAYS	175.00
96	* B1141422EH	STOCK, 12, ULTIMATE	150.00
96	B1141427XR	STOCK, 12, MAX-4 (DT)	100.00
NS	B111639401	STOCK LOCALIZATION SPACER	2.50
97	BST41183EX	STOCK TUBE NUT (WITH NYLON INSERT)	2.75
NS	U1117469AE	STOCK TUBE WASHER, COMPOSITE	4.00
NS	U1117664AX	STOCK TUBE WASHER, WOOD	4.00
98	U1117797AA	STOCK REINFORCING PIECE (COMPOSITE MODELS)	5.75
99	B1141069AA	STOCK SHIM, #1 NO CAST (+1/8" DROP)	2.75
99	B1141070AA	STOCK SHIM, #1 W/ CAST (+1/8" DROP)	2.75
99	B1141071AA	STOCK SHIM, #2 NO CAST (NEUTRAL DROP)	2.75
99	B1141072AA	STOCK SHIM, #2 W/ CAST (NEUTRAL DROP)	2.75
99	B1141073AA	STOCK SHIM, #3 NO CAST (-1/8" DROP)	2.75
99	B1141074AA	STOCK SHIM, #3 W/ CAST (-1/8" DROP)	2.75
99A	U1117469AJ	STOCK TUBE SUPPORT, COMPOSITE	7.50
99A	U1117663AJ	STOCK TUBE SUPPORT, WOOD	7.50
100	*** U1117675E5	TRIGGER	26.00
101	B111620902	TRIGGER PIN	1.25
102A	B1141354AA	TRIGGER GUARD ASSEMBLY, W/ BLACK CARRIER (COMPLETE)	175.00
102A	B1141355AA	TRIGGER GUARD ASSEMBLY, W/ NICKEL MACHINE-TURNED CARRIER	175.00
102A	B1141356AA	TRIGGER GUARD ASSEMBLY, W/ SATIN NICKEL CARRIER (COMPLETE)	175.00
102	*** B1141048AE	TRIGGER GUARD	17.50
103	B111603401	TRIGGER GUARD BUFFER	1.25
104	B111621702	TRIGGER GUARD BUSHING (2 REQUIRED)	3.75
105	B111621303	TRIGGER GUARD PIN, (2 REQUIRED)	2.50
105	B111645703	TRIGGER GUARD PIN, (2 REQUIRED)	2.50
106	B111621801	TRIGGER GUARD PIN RETAINER (2 REQUIRED)	1.25

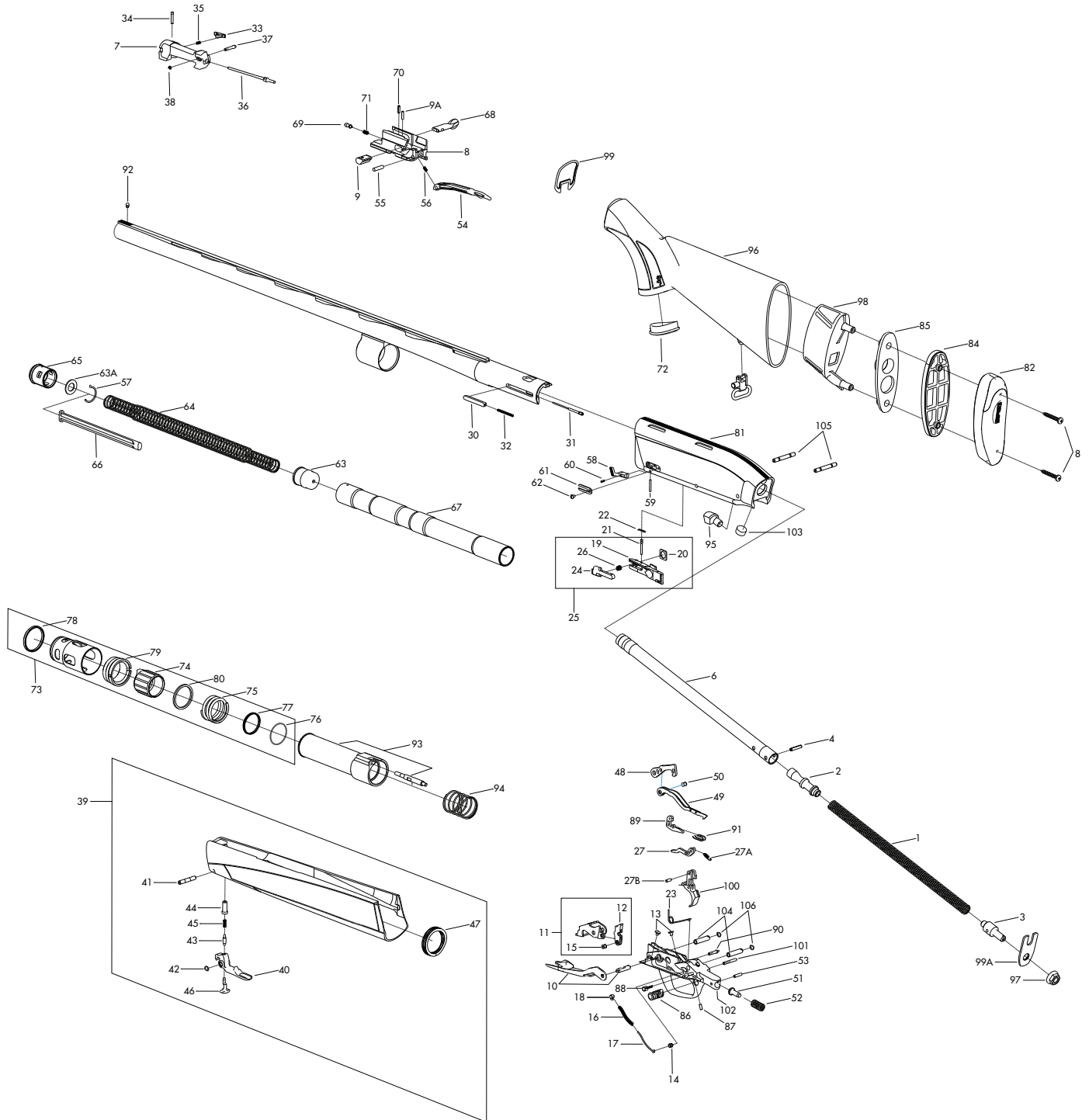
*Indicates part must be fitted by Browning Service Department or qualified gunsmith.
 ***Factory replacement only. Firearm must be returned. (DT) Denotes Dura-Touch Armor Coating
 +Part may be purchased only by holders of a current, valid Federal Firearms License.
 NOTE: Unless otherwise indicated, part is interchangeable between gauges/calibers.



12 Gauge Autoloading Shotgun

MAXUS®

NOTE: WHEN ORDERING PARTS USE THE PART NUMBER AND NOT THE SCHEMATIC REFERENCE NUMBER.



Schematic is provided for parts identification only and should not be used as a guide to assemble guns.
CAUTION: Browning parts are not recommended for use in other guns though models may be similar. Inadequately fitted parts may be dangerous.