



# Automatic-5 Shotgun – Standard, Light and Magnum Models 12, 16 and 20 Gauge

The Original  
**AUTO-5**

**IMPORTANT:** When ordering, list part number, part name, gun gauge/caliber and serial number. Please specify grade.  
Prices F.O.B. point of shipment — subject to change without notice. Prices effective January 1, 2013.

REF. NO.	PART NO.	DESCRIPTION	MSRP (US\$)
1	B1111001	ACTION SPRING	\$2.50
2	B1111003	ACTION SPRING FOLLOWER	3.75
3	B1111005	ACTION SPRING PLUG	2.00
4	B1111007	ACTION SPRING PLUG PIN	2.00
4	B1111006	ACTION SPRING	2.00
5	* B1111009	ACTION SPRING TUBE	5.00
6	* B1111017	BARREL EXTENSION ASSEMBLY, 12	110.00
6	* B1111015	BARREL EXTENSION ASSEMBLY, 12M	110.00
6	* B1111022	BARREL EXTENSION ASSEMBLY, 16	110.00
6	* B1111024	BARREL EXTENSION ASSEMBLY, 20	110.00
6	* B1111025	BARREL EXTENSION ASSEMBLY, 20M	110.00
7	* B1111027	BREECH BLOCK, 12-12M	110.00
7	* B1111032	BREECH BLOCK, 16	110.00
7	* B1111036	BREECH BLOCK, 20	110.00
7	* B1111035	BREECH BLOCK, 20M	110.00
8	* B1111040	BUTT PLATE	5.00
9	B1111042	BUTT PLATE SCREW	2.50
NS	B1111057	SLING EYELET, REAR	10.75
11	* B1111064	CARRIER ASSEMBLY, 12, 2-PIECE	86.00
11	* B1111062	CARRIER ASSEMBLY, 12M	86.00
11	* B1111066	CARRIER ASSEMBLY, 16, 2-PIECE	86.00
11	* B1111068	CARRIER ASSEMBLY, 20-20M, 2-PIECE	86.00
12	* B1111070	CARRIER DOG, 12-12M	12.25
12	* B1111071	CARRIER DOG, 16-20-20M	12.25
13	B1111076	CARRIER DOG FOLLOWER, 12-12M	2.25
13	B1111077	CARRIER DOG FOLLOWER, 16-20-20M	2.25
14	B1111079	CARRIER DOG PIN, 12-12M	2.25
14	B1111080	CARRIER DOG PIN, 16-20-20M	2.25
15	B1111081	CARRIER DOG SPRING, 12-12M	1.75
15	B1111083	CARRIER DOG SPRING, 16-20-20M	1.75
16	* B1111086	CARRIER LATCH ASSEMBLY, 12	12.50
16	* B1111085	CARRIER LATCH ASSEMBLY, 12M	12.50
16	* B1111089	CARRIER LATCH ASSEMBLY, 16	12.50
16	* B1111090	CARRIER LATCH ASSEMBLY, 20-20M	12.50
17	B1111092	CARRIER LATCH BUTTON, 12	3.50
17	B1111093	CARRIER LATCH BUTTON, 12M-16	3.50
17	B1111094	CARRIER LATCH BUTTON, 20-20M	3.50
18	* B1111103	CARRIER SCREW	3.25
19	* B1111107	CARRIER SPRING, 12-12M (TRIGGER PLATE TYPE)	3.25
19	* B1111111	CARRIER SPRING, 16-20-20M (TRIGGER PLATE TYPE)	3.25
20	* B1111115	CARTRIDGE STOP, 12-12M	12.00
20	* B1111117	CARTRIDGE STOP, 16-20-20M	12.00
21	B1111120	CARTRIDGE STOP SPRING	1.75
22	B1111098	CARTRIDGE STOP PIN / CARRIER LATCH PIN / MAGAZINE CUT OFF PIN	1.75
23	* B1111121	EJECTOR / EJECTOR ROD, 20M	13.25
24	* B1111127	EJECTOR, 12 (16 PRE-WAR)	15.00
24	* B1111134	EJECTOR, 12M-16-20	15.00
25	* B1111136	EJECTOR RIVET, 12	3.25
25	* B1111142	EJECTOR RIVET, 12M-16-20	3.25
26	B1111124	EJECTOR SPRING, 20M	3.25
27	B1111126	EJECTOR SPRING RETAINER, 20M	3.25

REF. NO.	PART NO.	DESCRIPTION	MSRP (US\$)
28	* B1111147	EXTRACTOR, 12-12M-16-20, LEFT	\$6.00
29	B1111155	EXTRACTOR PIN	2.50
30	* B1111150	EXTRACTOR, 12-12M-16-20, RIGHT	13.50
30	* B1111149	EXTRACTOR, 20M	15.25
NS	B1111148	EXTRACTOR SPRING FOLLOWER, 20M	2.25
NS	B1111164	EXTRACTOR SPRING FOLLOWER, 16-20, RIGHT	2.25
31	B1111159	EXTRACTOR SPRING, 12-12M-16-20, LEFT	2.00
32	B1111163	EXTRACTOR SPRING, 20M	2.00
32	B1111160	EXTRACTOR SPRING, 12-12M, RIGHT	2.00
32	B1111162	EXTRACTOR SPRING, 16-20, RIGHT	2.00
33	* B1111165	FIRING PIN, 12-12M	77.25
33	* B1111167	FIRING PIN, 16-20-20M	77.25
34	B1111168	FIRING PIN STOP, 12-12M	3.00
34	B1111169	FIRING PIN STOP, 16-20-20M	3.00
35	* B1111175	FOREARM, 12, COMPOSITE STALKER (5-SHOT)	75.00
35	* B1111172	FOREARM, 12, FIELD (5-SHOT)	95.00
35	* B1111047	FOREARM, 12, GR III (5-SHOT) (FINAL TRIBUTE)	250.00
35	* B1111176	FOREARM, 12M, COMPOSITE STALKER (5-SHOT)	75.00
35	* B1111170	FOREARM, 12M, FIELD (5-SHOT)	125.00
35	* B1111183	FOREARM, 16, FIELD (5-SHOT)	95.00
35	* B1111044	FOREARM, 16, GR III (5-SHOT)	250.00
35	* B1111191	FOREARM, 20, FIELD (5-SHOT)	95.00
35	* B1111192	FOREARM, 20M, FIELD (5-SHOT)	85.00
36	B1111197	FRICTION PIECE BRONZE, 12	6.00
37	B1111195	FRICTION PIECE BRONZE, 12M	7.50
36	B1111199	FRICTION PIECE BRONZE, 16-20	6.25
37	B1111198	FRICTION PIECE BRONZE, 20M	7.50
38	B1111205	FRICTION RING, 12-12M	3.25
38	B1111207	FRICTION RING, 16-20-20M	3.25
39	B1111215	FRICTION SPRING, 12	2.50
39	B1111216	FRICTION SPRING, 16-20	2.50
40	* B1111228	HAMMER ASSEMBLY, 12	18.75
40	* B1111225	HAMMER ASSEMBLY, 12M	18.75
40	* B1111232	HAMMER ASSEMBLY, 16-20-20M	20.25
41	B1111235	HAMMER PIN	2.25
41A	B1111237	HAMMER ROLLER	2.50
41B	B1111240	HAMMER ROLLER PIN	1.25
42	B1111247	LINK, 12	15.00
42	B1111245	LINK, 12M	20.00
42	B1111251	LINK, 16-20	20.00
42	B1111243	LINK, 20M	20.00
43	B1111252	LINK PIN, 12-12M	2.50
43	B1111254	LINK PIN, 16-20-20M	2.50
44	B1111280	LOCK SCREW	3.00
45	* B1111256	LOCKING BLOCK, 12-12M	35.00
45	* B1111261	LOCKING BLOCK, 16-20-20M	40.00
46	B1111269	LOCKING BLOCK LATCH, 12 (FOR 2-PIECE CARRIER)	28.25
46	B1111265	LOCKING BLOCK LATCH, 12M	22.00
46	B1111272	LOCKING BLOCK LATCH, 16-20 (FOR 2-PIECE CARRIER)	19.50

\*Indicates part must be fitted by Browning Service Department or qualified gunsmith.  
 \*\*\*Factory replacement only. Firearm must be returned to Browning Service Department for service.  
 12M and 20M denotes compatibility with both 2 3/4" and 3" shells.  
 +Part may be purchased only by holders of a current, valid Federal Firearms License.  
 NOTE: Unless otherwise indicated, part is interchangeable between gauges/calibers.



# Automatic-5 Shotgun – Standard, Light and Magnum Models 12, 16 and 20 Gauge

The Original  
**AUTO-5**

**IMPORTANT:** When ordering, list part number, part name, gun gauge/caliber and serial number. Please specify grade. Prices F.O.B. point of shipment — subject to change without notice. Prices effective January 1, 2013.

REF. NO.	PART NO.	DESCRIPTION	MSRP (US\$)
46	B1111264	LOCKING BLOCK LATCH, 20M	\$20.00
47	B1111275	LOCKING BLOCK LATCH PIN	2.50
48	B1111277	LOCKING BLOCK LATCH SPRING, 12-12M	1.25
48	B1111279	LOCKING BLOCK LATCH SPRING, 16-20-20M	2.00
49	B1111285	MAGAZINE CAP, 12-12M	20.00
49	B1111292	MAGAZINE CAP, 12-12M (W/ SLING EYELET)	20.00
49	B1111287	MAGAZINE CAP, 16-20-20M	20.00
49	B1111294	MAGAZINE CAP, 16-20-20M (W/ SLING EYELET)	20.00
50	B1111297	MAGAZINE CUTOFF, 12	11.00
50	B1111295	MAGAZINE CUTOFF, 12M	11.00
50	B1111298	MAGAZINE CUTOFF, 16 (OBSOLETE)	----
50	B1111299	MAGAZINE CUTOFF, 20-20M	11.00
51	B1111305	MAGAZINE CUTOFF SPRING	1.25
52	B1111310	MAGAZINE CUTOFF SPRING SCREW	2.25
53	B1111318	MAGAZINE FOLLOWER, 12-12M NOTE: FITS 12 GAUGE 3" MODELS MANUFACTURED AFTER SEPT. 1986 AND ALL 12 GAUGE 2.75" MODELS	5.50
53	B1111315	MAGAZINE FOLLOWER, 12M NOTE: FITS ONLY 12 GAUGE 3" MODELS MANUFACTURED PRIOR TO SEPT. 1986	2.25
53	B1111319	MAGAZINE FOLLOWER, 16	5.50
53	B1111321	MAGAZINE FOLLOWER, 20-20M	5.50
NS	B1111499	MAGAZINE PLUG / 3-SHOT ADAPTOR	2.25
54	B1111325	MAGAZINE SPRING, 12-12M	3.00
54	B1111329	MAGAZINE SPRING, 16-20-20M	3.00
55	B1111333	MAGAZINE SPRING RETAINER, 16-20-20M	3.25
56	* B1111335	MAGAZINE TUBE, 12-12M (5-SHOT) NOTE: FITS 12 GAUGE 3" MODELS MANUFACTURED AFTER SEPT. 1986 AND ALL 12 GAUGE 2.75" MODELS	55.75
56	* B1111338	MAGAZINE TUBE, 12M (5-SHOT) NOTE: FITS ONLY 12 GAUGE 3" MODELS MANUFACTURED PRIOR TO SEPT. 1986	55.75
56	* B1111339	MAGAZINE TUBE, 16 (5-SHOT)	55.75
56	* B1111343	MAGAZINE TUBE, 20 (5-SHOT)	55.75
56	* B1111342	MAGAZINE TUBE, 20M (5-SHOT)	55.75
57	B1111344	MAINSRING	8.50
58	B1111345	MAINSRING SCREW	2.25
59	B1111346	OPERATING HANDLE, 12-12M	20.50
59	B1111347	OPERATING HANDLE, 16-20-20M	28.50
60	*+ B1111362	RECEIVER, 12, LIGHT	400.00
60	*+ B1111372	RECEIVER, 20, LIGHT	400.00
60	*+ B1111355	RECEIVER, 12, MAGNUM	400.00
60	*+ B1111357	RECEIVER, 20, MAGNUM	400.00
60	*+ B1111368	RECEIVER, 16, SWEET	400.00
61	B1111378	RECOIL SPRING, 12	7.50
61	B1111375	RECOIL SPRING, 12M	12.50
61	B1111379	RECOIL SPRING, 16	9.50
61	B1111381	RECOIL SPRING, 20	9.50
61	B1111382	RECOIL SPRING, 20M	10.50
62	B1111390	SAFETY BALL	1.00

REF. NO.	PART NO.	DESCRIPTION	MSRP (US\$)
63	* B1111386	SAFETY, LEFT HAND (CROSSBOLT)	\$9.75
63	* B1111385	SAFETY, RIGHT HAND (CROSSBOLT)	7.50
64	* B1111405	SAFETY SEAR, 12-12M	10.50
64	* B1111406	SAFETY SEAR, 16-20-20M	10.50
65	B1111408	SAFETY SEAR PIN	2.25
66	B1111410	SAFETY SEAR SPRING	1.75
67	B1111414	SAFETY SEAR SPRING FOLLOWER	1.75
NS	B1111403	SIGHT ADJUSTING SCREW, ELEVATION, BUCK SPECIAL	4.50
NS	B1111401	SIGHT ADJUSTING SCREW, WINDAGE, BUCK SPECIAL	4.25
NS	B1111400	SIGHT APERTURE, REAR, BUCK SPECIAL NOTE: FOR MODELS MANUFACTURED AFTER 1973. WILL FIT OLDER MODELS WITH MODIFICATION.	9.50
NS	* B1111395	SIGHT BASE, REAR, 12-12M, BUCK SPECIAL	28.50
NS	*** B1111397	SIGHT BASE, REAR, 16, BUCK SPECIAL (OBSOLETE)	----
NS	* B1111398	SIGHT BASE, REAR, 20-20M, BUCK SPECIAL	28.50
68	B1111431	SIGHT BEAD, 12-12M-16-20-20M (PLAIN & VENT RIB BARRELS)	3.25
68	B1111425	SIGHT BEAD, 12-12M-16-20-20M (PLAIN & VENT RIB BARRELS) NOTE: PRE 1984 UNTHREADED BEAD	3.50
NS	B1111423	SIGHT BEAD, FRONT, BUCK SPECIAL (GOLD BEAD)	9.50
NS	* B1111399	SIGHT BODY, REAR, BUCK SPECIAL	12.50
NS	B1111404	SIGHT PIN, BUCK SPECIAL NOTE: 1974 AND NEWER MODELS ONLY	2.25
NS	* B1111421	SIGHT RAMP, FRONT, BUCK SPECIAL, 12-12M-16	14.75
NS	* B1111422	SIGHT RAMP, FRONT, BUCK SPECIAL, 20-20M	14.75
68A	* B1111048	STOCK, 12, FIELD	175.00
68A	* B1111045	STOCK, 12, GR III (FINAL TRIBUTE)	350.00
68A	* B1111052	STOCK, 12-12M, COMPOSITE STALKER	130.00
68A	* B1111046	STOCK, 12M, FIELD (W/ RECOIL PAD)	195.00
68A	* B1111056	STOCK, 16-20-20M, FIELD	175.00
68A	B1111043	STOCK, 16-20-20M, GR III	350.00
69	* B1111435	TANG SCREW (FOR PISTOL GRIP STOCK ONLY)	4.50
70	* B1111444	TRIGGER, GOLD PLATED (FOR CROSSBOLT SAFETY ONLY)	37.50
71	B1111445	TRIGGER PIN	2.00
72	* B1111466	TRIGGER PLATE, 12-12M (FOR CROSSBOLT SAFETY ONLY)	106.00
72	* B1111473	TRIGGER PLATE, 16-20-20M (FOR CROSSBOLT SAFETY ONLY)	106.00
73	* B1111475	TRIGGER PLATE SCREW, FRONT, 12-12M	3.75
73	* B1111477	TRIGGER PLATE SCREW, FRONT, 16-20-20M	3.75
74	* B1111480	TRIGGER PLATE SCREW, REAR, 12-12M	3.75
74	* B1111481	TRIGGER PLATE SCREW, REAR, 16-20-20M	3.75
75	* B1111486	TRIGGER SPRING	2.00
76	B1111495	TRIGGER SPRING RETAINING PIN	1.25

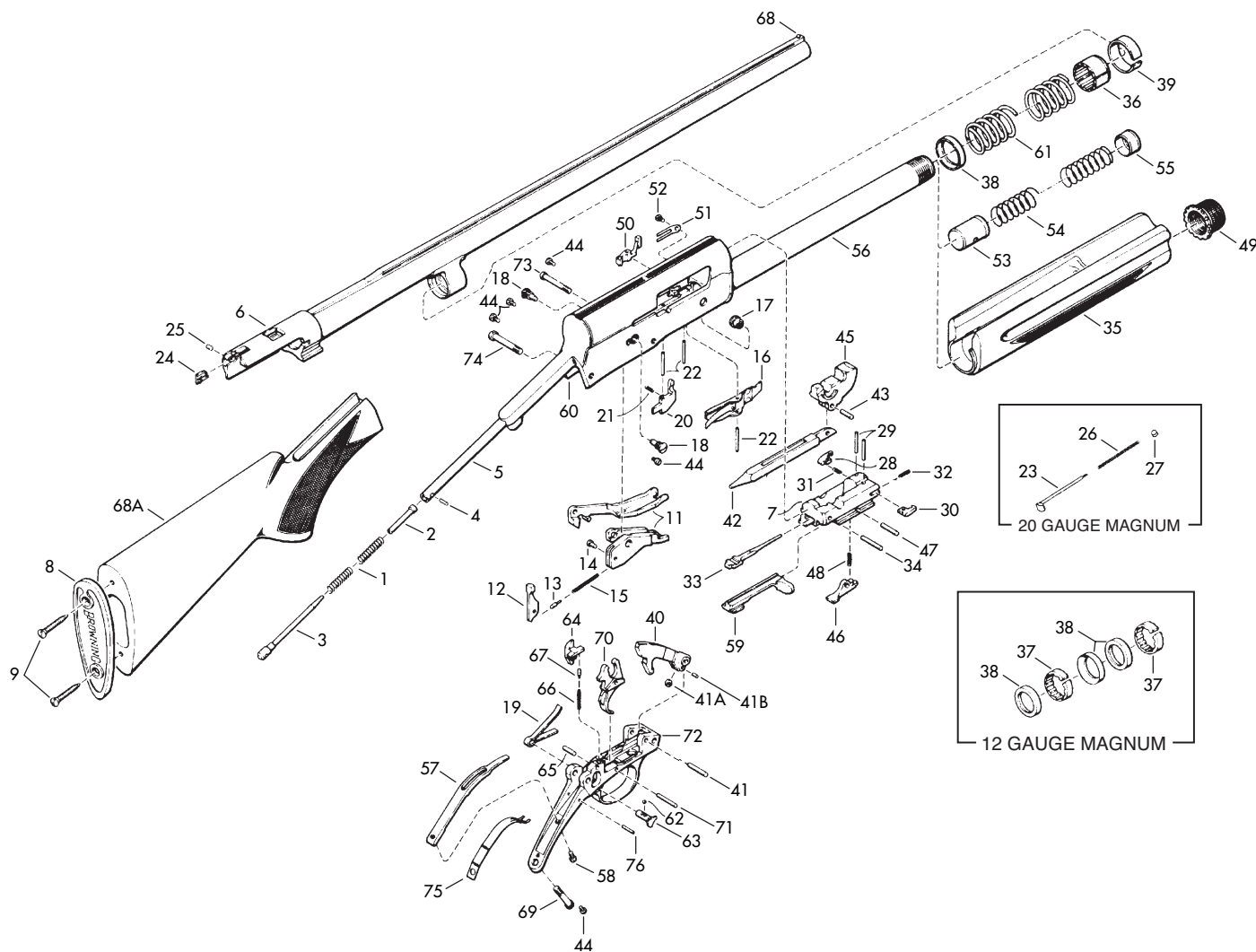
\*Indicates part must be fitted by Browning Service Department or qualified gunsmith.  
 \*\*\*Factory replacement only. Firearm must be returned to Browning Service Department for service.  
 12M and 20M denotes compatibility with both 2 1/4" and 3" shells.  
 +Part may be purchased only by holders of a current, valid Federal Firearms License.  
 NOTE: Unless otherwise indicated, part is interchangeable between gauges/calibers.



**Automatic-5 Shotgun – Standard, Light and  
Magnum Models 12, 16 and 20 Gauge**

The Original  
**AUTO-5**

**NOTE: WHEN ORDERING PARTS USE THE PART NUMBER AND NOT THE SCHEMATIC REFERENCE NUMBER.**



Schematic is provided for parts identification only and should not be used as a guide to assemble guns.  
CAUTION: Browning parts are not recommended for use in other guns though models may be similar. Inadequately fitted parts may be dangerous.